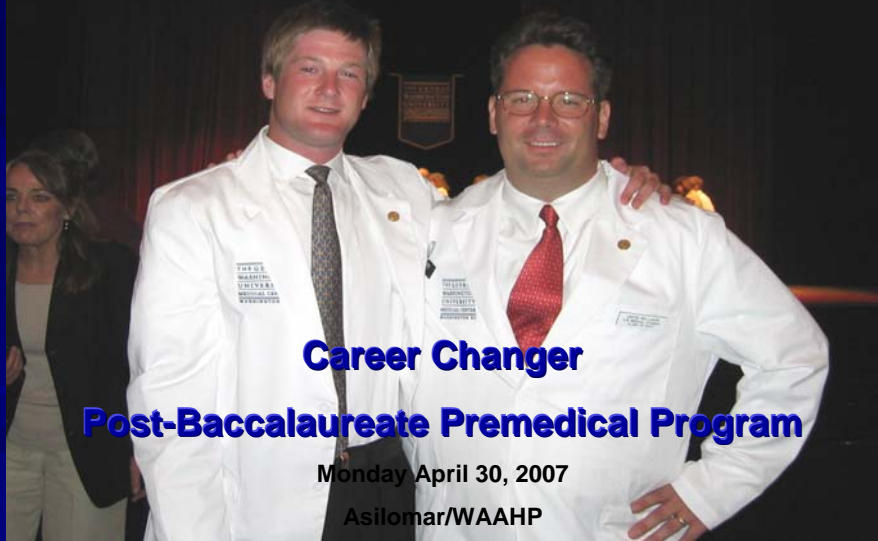


Choosing the Best Fit



Vocabulary

- **Nontraditional Student**, (*“retread”*) a student who is older than the average age of those who usually attend your institution and or older than those who more commonly apply to Medical School. (*They frequently can be found with dependents, mortgages, and a strong calling to be of service*)
- **Post-Baccalaureate Premedical Program--career changer type**, an academic program that allows non-science majors to return to school to get the necessary courses in order to apply to Medical school in a relatively quick manner. Many will last 12 months to 2 years.

Formal vs. Informal Program

- **Formal Program**, either at the undergraduate or graduate level, grants a certificate after completion, and provides opportunities for students to apply for student loans. Usually has a screening admissions process, a structured curriculum, letter service and advising.
- **Informal Program**, does not provide a certificate after completion, does not provide opportunities for students to apply for loans, and may have open enrollment for all students who are interested.

Formal Career Changer Post-Bac Programs in the West

- Mills College
- Montana State University
- Scripps College
- San Francisco State University
- University of Southern California

Formal Career Changer Post-Bac Programs in other Regions

- Agnes Scott
- Bennington
- Brandeis
- Bryn Mawr
- Goucher
- Johns Hopkins
- Mount Holyoke
- New York University
- Tufts University
- University of Miami
- University of Pennsylvania
- University of Vermont
- University of Virginia

Advantages Formal Post-Bac Program

- Structured
- Priority Registration
- Early Admissions Agreements or Linkages
- Advising
- Letter Service
- Volunteer Placement
- Community of Similar Students
- Some Have Built in MCAT Preparation

Disadvantages of a Formal Post-Bac Program

- Can be costly
- Increase long term debt load
- Possibly less flexible
- Not as many Formal Programs as Informal Programs

Which Student Should Apply?

- Non-Science Majors
- Academically Capable
- Strong Commitment to Medicine & Service
- Minimum GPA ranges from 3.0 to 3.3
- (Scripps Averages 2007: 3.53 range 3.14 to 3.94, SAT 1320 range 1250-1500, Age 26-28 range from 22 to 46)
- Generally More Women than Men (Scripps 2007 50/50)